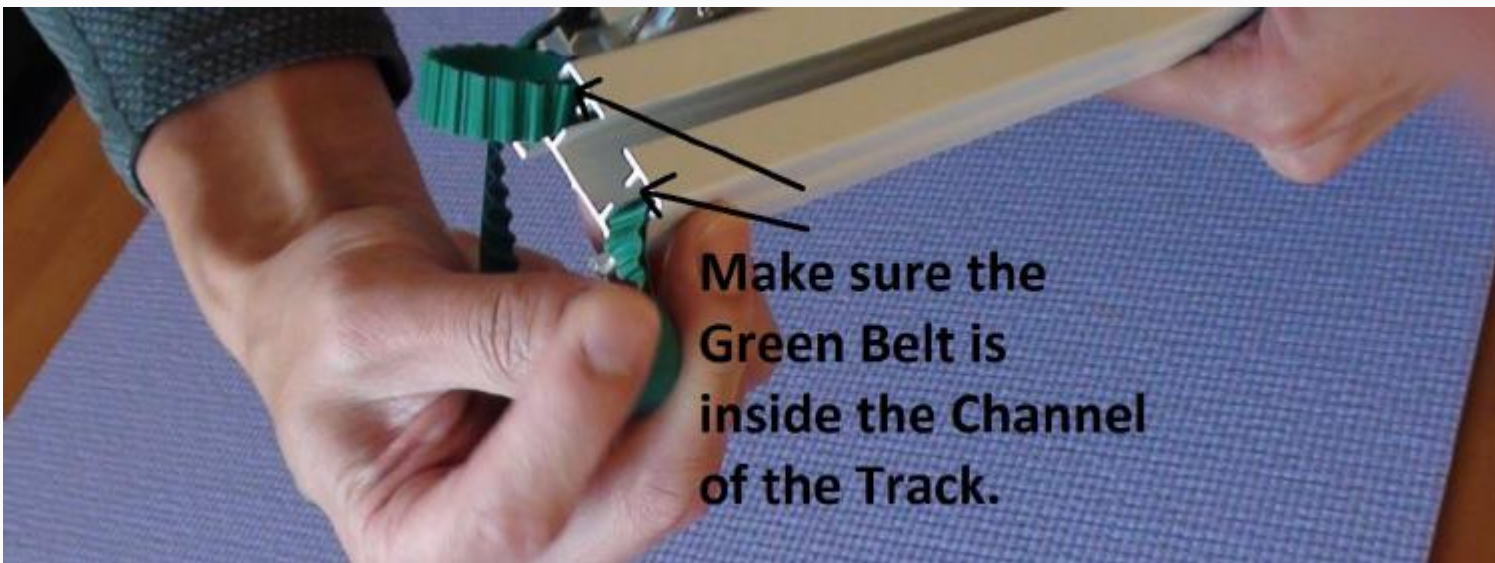


Curtain Track Assembling Instructions

1, Making sure that the Green Drive Belt is inside the Channel of the inner Track



• **Note:** During the assembling process, pay attention to the Green Belt which should be inside the channel of the Track. If it slips out at any part of the track, use a small flat headed screw driver to push it back in.

Part 3: Unfold the Track into a straight line as shown in images 1-4 below



Part 4: Re-assemble partially disassembled Master Carrier

• **Note:** Make sure it stays inside the Track as shown below. (Slide it back if it does not)

Partially Disassembled Master Carrier



Part 5: Turn the Track sideways. Slide the silver Track Connector into the middle of the sections. Tighten the four screws as shown in images 1-4 below

• **Note:** While doing it, push the 2 Track sections together as close as possible. (You may move the Partially Disassembled Carrier and the White Buckle to come together if needed. Be noted that the Green Drive Belt is bent or crooked)



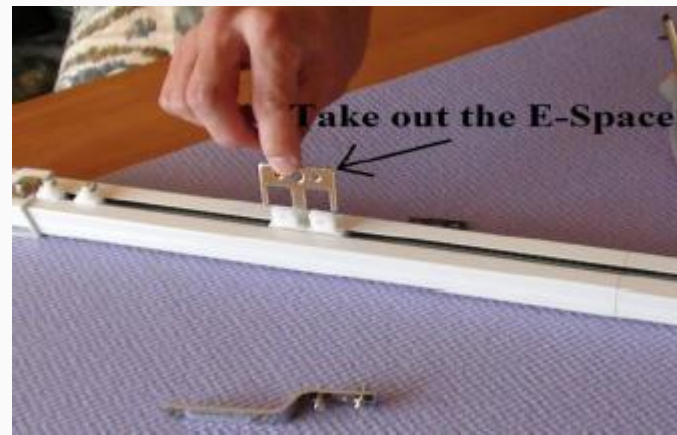
• Do not over tighten the screws which might create a splice at the joint, but the screws should be tightened enough to be able to fix the 2 sections together

• The Silver Track Connector should be equally in the 2 Track sections and with 2 screws on each track section

Part 6: Put the Track facing up and disassemble the Partially Disassembled Carrier



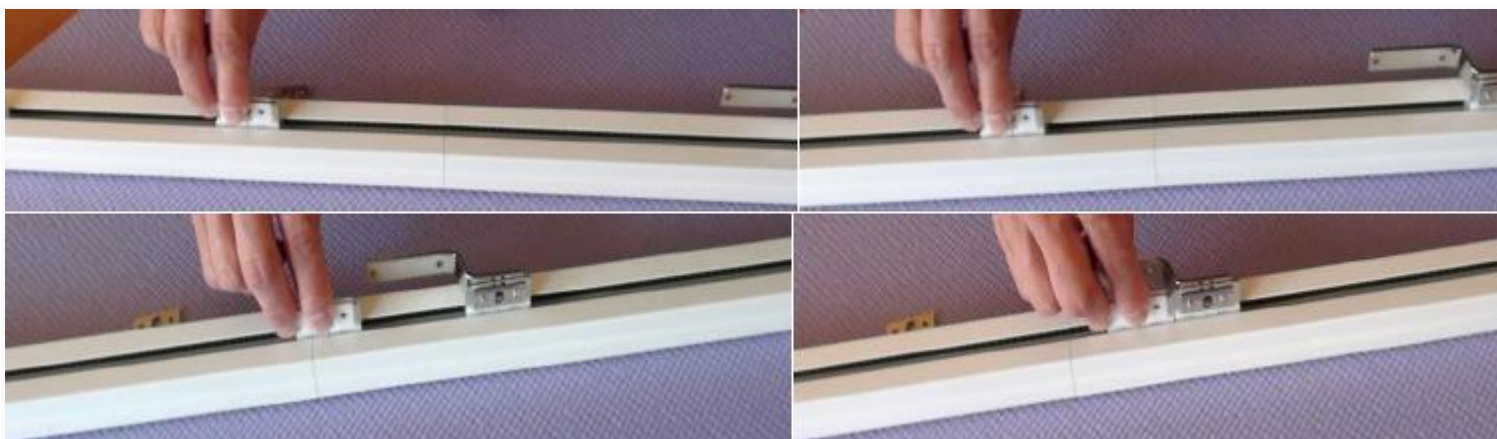
- There is a Master Carrier which is partially disassembled. A white Buckle is next to it. Disassemble it by taking out two screws, remove the Bar and take out the S



Part 7: Put the E-Spacer into the two White Buckles



Part 8: Hand move the Master Carrier back and forth the whole Track a few times to make it travels smoothly along the Track



Part 9: Skip this step if the Carrier travels the Track smoothly. In case the Carrier travels loosely, loosen the screw (only a couple turns) on the Stopper, pull the Idler outward (the arrow slightly which will straighten the Drive Belt inside the Track, which is causes the sluggish movement



Loosen only 2 to 3 rounds of the screw on the Stopper.



Pull the Idler outward slightly to straighten the Belt inside the Track

• Hand move the Master Carriers back and forth the whole Track a few times to make sure it travels smoothly the whole Track. Re-tighten the previously loosened screw on the Stopper.

• **Warning:** It is very important to make sure the Master Carriers are travelling along the Track completely smoothly. If not, reverse the steps and start over again step by step carefully. Contact us for help if needed.

Part 10: Assemble the Master Carrier as shown in images 1-4 below



- Tighten good the two screws on the Bar
- Hand move the Carrier to make sure it travels the Track

4
Center Open
The Carrier Bars should be Overlapped when meeting.



One Way Draw
The Carrier Bar should point to the end of the Track

• **Warning (Very Important):** Do **NOT** hold the Track by one end and lift it up. Especially if the Track is two or more segments and has joint(s). When handling the Track, hands must hold the Track on both left and right to the joint, to avoid creating a splice. Please make sure you have an assistant to help if the Track is long.